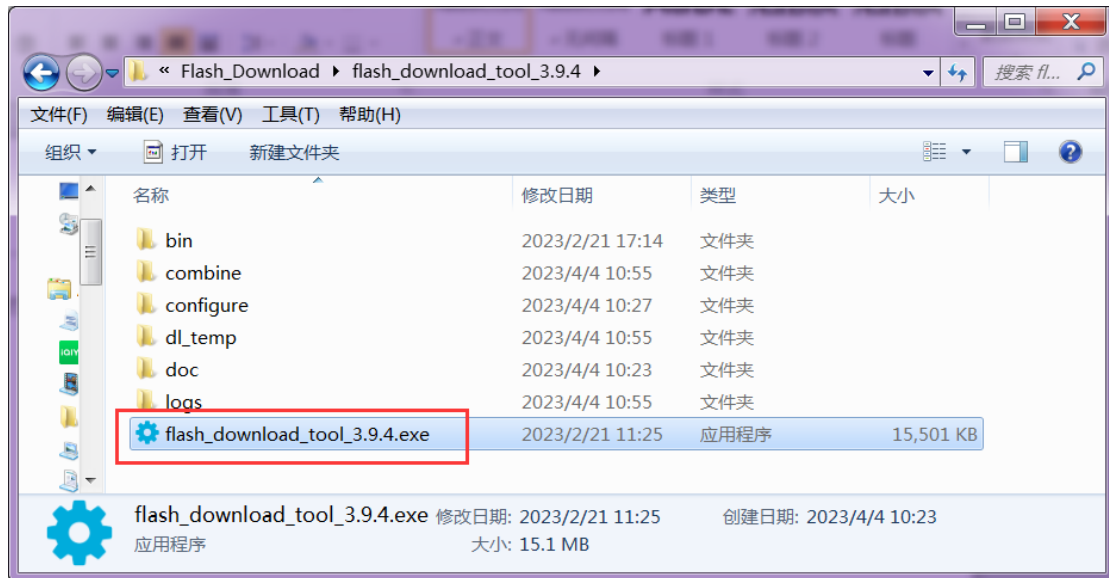


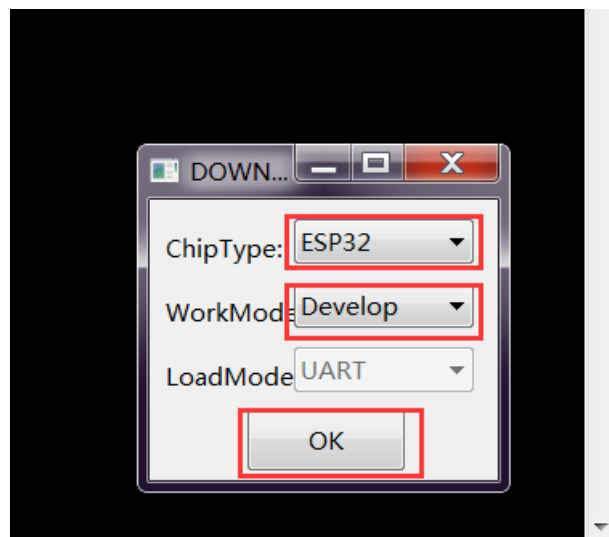
1. Download **flash\_download\_tool** tool bag information (also can be used provided),  
download address:

<https://www.espressif.com.cn/zh-hans/support/download/other-tools>

2. Download after decompression, open **flash\_download\_tool** directory and find  
flash\_download\_tool executable file, as shown in the figure below:



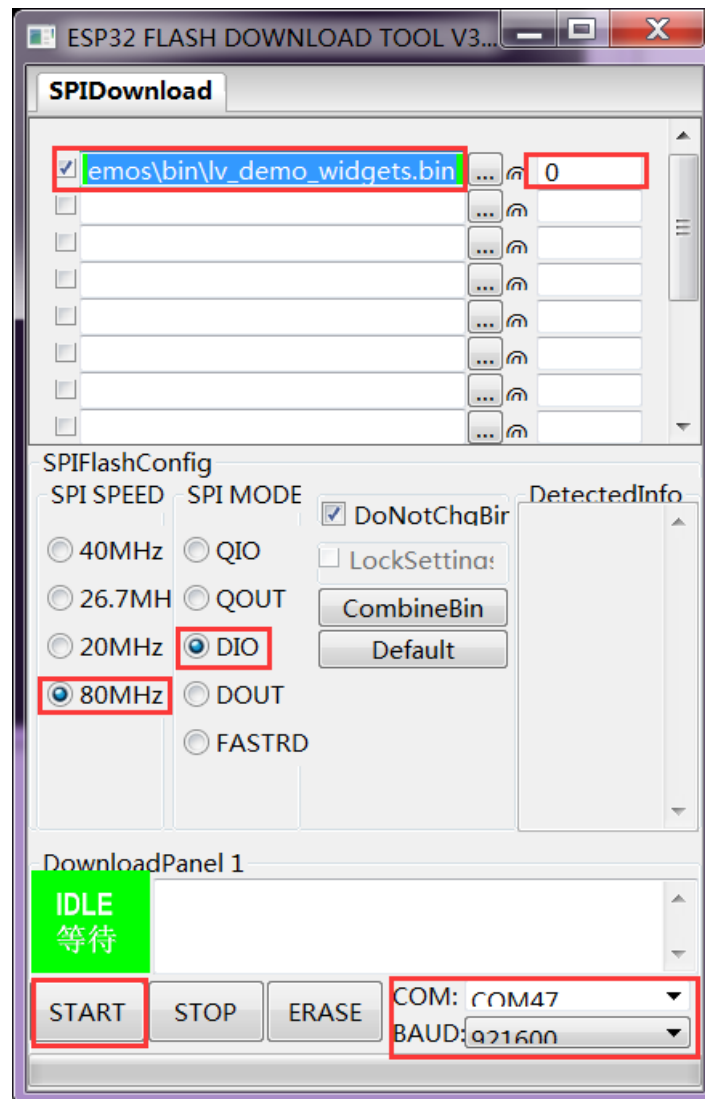
3. Double-click to open flash\_download\_tool tools, according to the following Settings,  
and then click OK:



4. Open the tools, for the following option:
  - A. choose the bin file need to burn;
  - B. Set the burning address to 0;

- C. Set SPI\_ SPEED;
- D. Set SPI\_MODE;
- E. Set COM;
- F. SetBAUD;

Click the **START** button to start burning, as shown in the following figure:



5. When the following prompt appears, it indicates that the burning is complete. Press the reset button or power on again to see the program running.

DownloadPanel 1

**FINISH**  
完成

AP: 08B61FEEA1A5 STA: 08B61FEEA1A4  
BT: 08B61FEEA1A6 ETHERNET:

START

STOP

ERASE

COM: COM47

BAUD: 921600