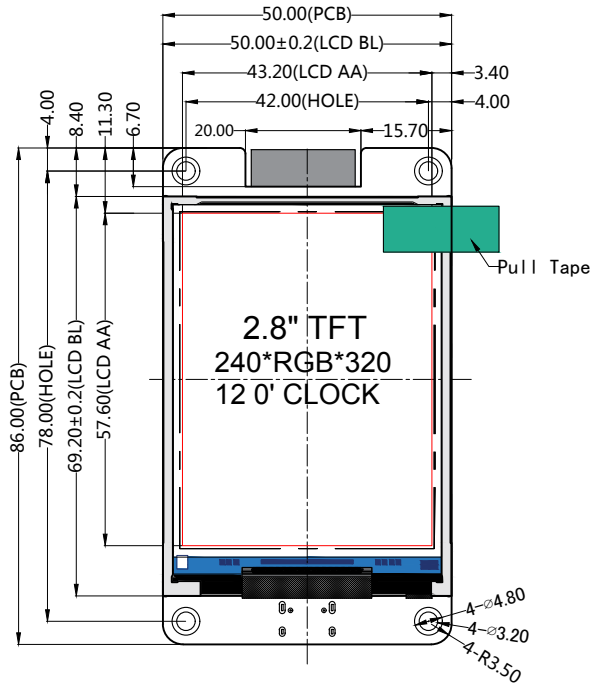
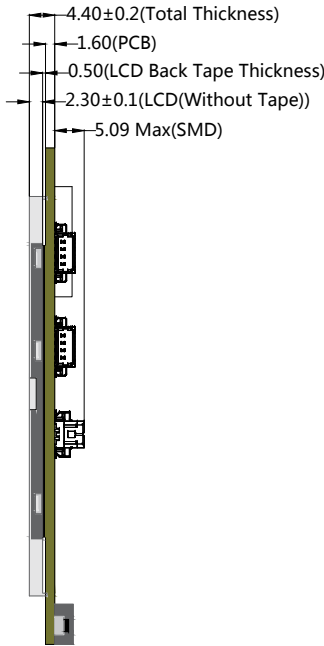


REVISION	RECORD	Date
V1.0	First release	2024-08-31

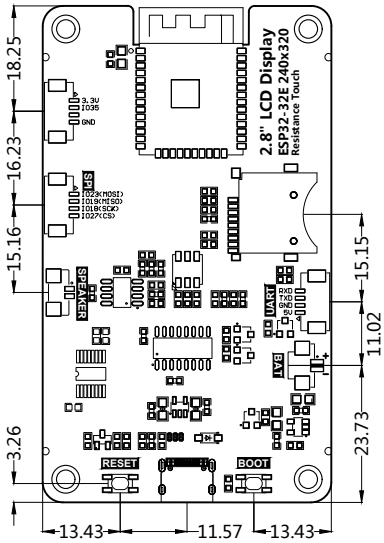
Front



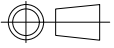
Side



Back



- NOTES:
- 1.DISPLAY TYPE: 2.8 inch ESP32-32E DISPLAY
  - 2.VIEWING DIRECTION: 12 O' CLOCK(TN TFT)
  - 3.DRIVE IC: ILI9341V
  - 4.POLARIZER MODE: TRANSMISSIVE/POSITIVE
  - 5.RESOLUTION: 240\*RGB\*320
  - 6.INTERFACE: SPI\_4-Line(CONNECT TO ESP32)
  - 7.UNMARKER TOLERANCE: ±0.2
  - 8.OPERATING TEMP: -10℃~+60℃

深圳市科易互动机器人有限公司						DRG DATE	2024-08-31
						DRAWING	Joan
TITLE.	LCM OUTLINE	REV.	UNIT	SIZE	 (3)	CHECK	Green
SKU.	E32N28T	V1.0	mm	A4		APPROVE	Rose